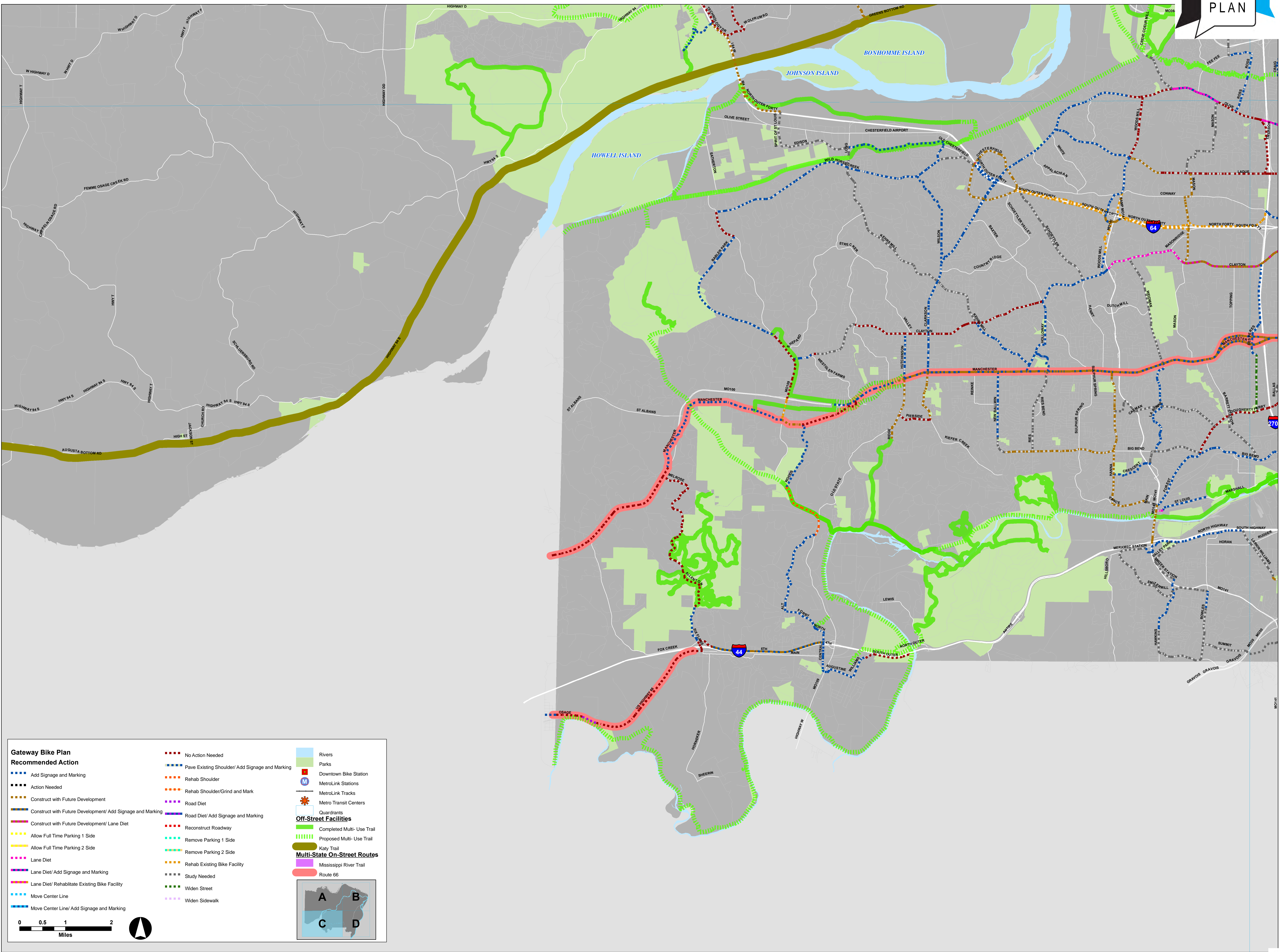


MAP 9: IMPLEMENTATION ACTION MAP C



**Gateway Bike Plan Recommended Action**

- Add Signage and Marking
- Action Needed
- Construct with Future Development
- Construct with Future Development/ Add Signage and Marking
- Construct with Future Development/ Lane Diet
- Allow Full Time Parking 1 Side
- Allow Full Time Parking 2 Side
- Lane Diet
- Lane Diet/ Add Signage and Marking
- Lane Diet/ Rehabilitate Existing Bike Facility
- Move Center Line
- Move Center Line/ Add Signage and Marking
- No Action Needed
- Pave Existing Shoulder/ Add Signage and Marking
- Rehab Shoulder
- Rehab Shoulder/Grind and Mark
- Road Diet
- Road Diet/ Add Signage and Marking
- Reconstruct Roadway
- Remove Parking 1 Side
- Remove Parking 2 Side
- Rehab Existing Bike Facility
- Study Needed
- Widen Street
- Widen Sidewalk

**Off-Street Facilities**

- Rivers
- Parks
- Downtown Bike Station
- MetroLink Stations
- MetroLink Tracks
- Metro Transit Centers
- Quadrants
- Completed Multi-Use Trail
- Proposed Multi-Use Trail
- Katy Trail
- Mississippi River Trail
- Route 66

**Multi-State On-Street Routes**

- Route 66

0 0.5 1 2 Miles

A B C D

